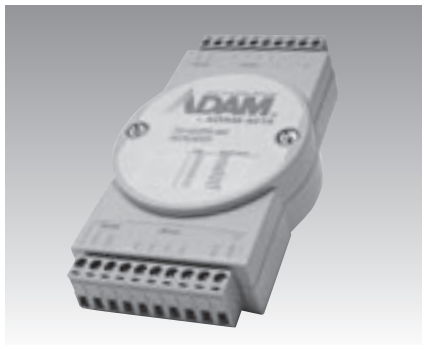


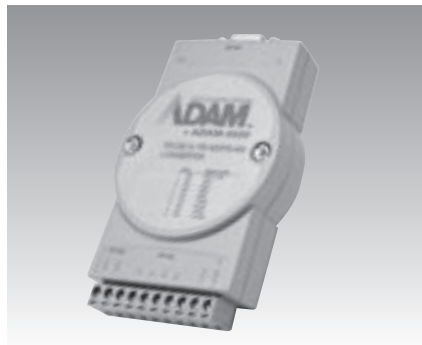
# ADAM-4510/4510S ADAM-4520/4522 ADAM-4521

RS-422/485 Repeaters

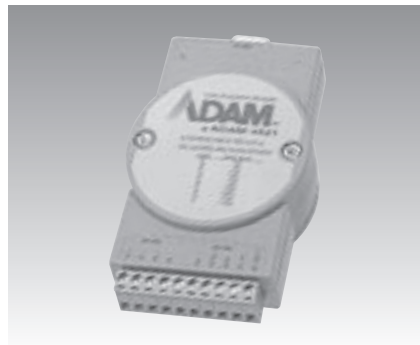
RS-232 to RS-422/485 Converters  
Addressable RS-422/485 to RS-232  
Converter



ADAM-4510/4510S



ADAM-4520/4522



ADAM-4521



## Specifications

### General

- **Connectors** 2 x Plug-in terminal blocks (#14 ~ 22 AWG) (RS-422/485)
- **Isolation Voltage** 3000 V<sub>DC</sub> (4510S only)
- **Power Consumption** 1.4 W @ 24 V<sub>DC</sub>

### Serial Communications

- **Input** RS-485 (2-wire) or RS-422 (4-wire)
- **Output** RS-485 (2-wire) or RS-422 (4-wire)
- **Speed Modes (bps)** 1200, 2400, 4800, 9600, 19.2 k, 38.4 k, 57.6 k, 115.2 k, RTS control and RS-422 (switchable)

## Specifications

### General

- **Connectors** 1 x Plug-in terminal block (#14 ~ 22 AWG) (RS-422/485)  
1 x DB9-F (RS-232)
- **Isolation Voltage** 3000 V<sub>DC</sub> (4520 only)
- **Power Consumption** 1.2 W @ 24 V<sub>DC</sub>

### Serial Communications

- **Input** RS-232 (4-wire)
- **Output** RS-485 (2-wire) or RS-422 (4-wire)
- **Speed Modes (bps)** 1200, 2400, 4800, 9600, 19.2 k, 38.4 k, 57.6 k, 115.2 k, RTS control and RS-422 (switchable)

## Specifications

### General

- **Connectors** 1 x Plug-in terminal block (#14 ~ 22 AWG) (RS-422/485)  
1 x DB9-F (RS-232)
- **Isolation Voltage** 1000 V<sub>DC</sub>
- **Power Consumption** 1.0 W @ 24 V<sub>DC</sub>
- **Built-in microprocessor and watchdog timer**

### Serial Communications

- **Input** RS-485 (2-wire) or RS-422 (4-wire)
- **Output** RS-232 (4-wire)
- **Speed Modes (bps)** 300, 600, 1200, 2400, 4800, 9600, 19.2 k, 38.4 k, 57.6 k, 115.2 k (software configurable)
- **RS-232 and 485 can be set to different baudrates**
- **RS-485 surge protection and automatic RS-485 data flow control**
- **Software configurable to either addressable or non-addressable mode**

## Common Specifications

### General

- **Power Input** Unregulated 10 ~ 30 V<sub>DC</sub> w/power reversal protection

### Environment

- **Operating Temperature** - 10 ~ 70° C (14 ~ 158° F)
- **Storage Temperature** - 25 ~ 85° C (-13 ~ 185° F)
- **Humidity** 5 ~ 95% RH

## Ordering Information

- **ADAM-4510** RS-422/485 Repeater
- **ADAM-4510S** Isolated RS-422/485 Repeater
- **ADAM-4520** Isolated RS-232 to RS-422/485 Converter
- **ADAM-4522** RS-232 to RS-422/485 Converter
- **ADAM-4521** Addressable RS-422/485 to RS-232 Converter